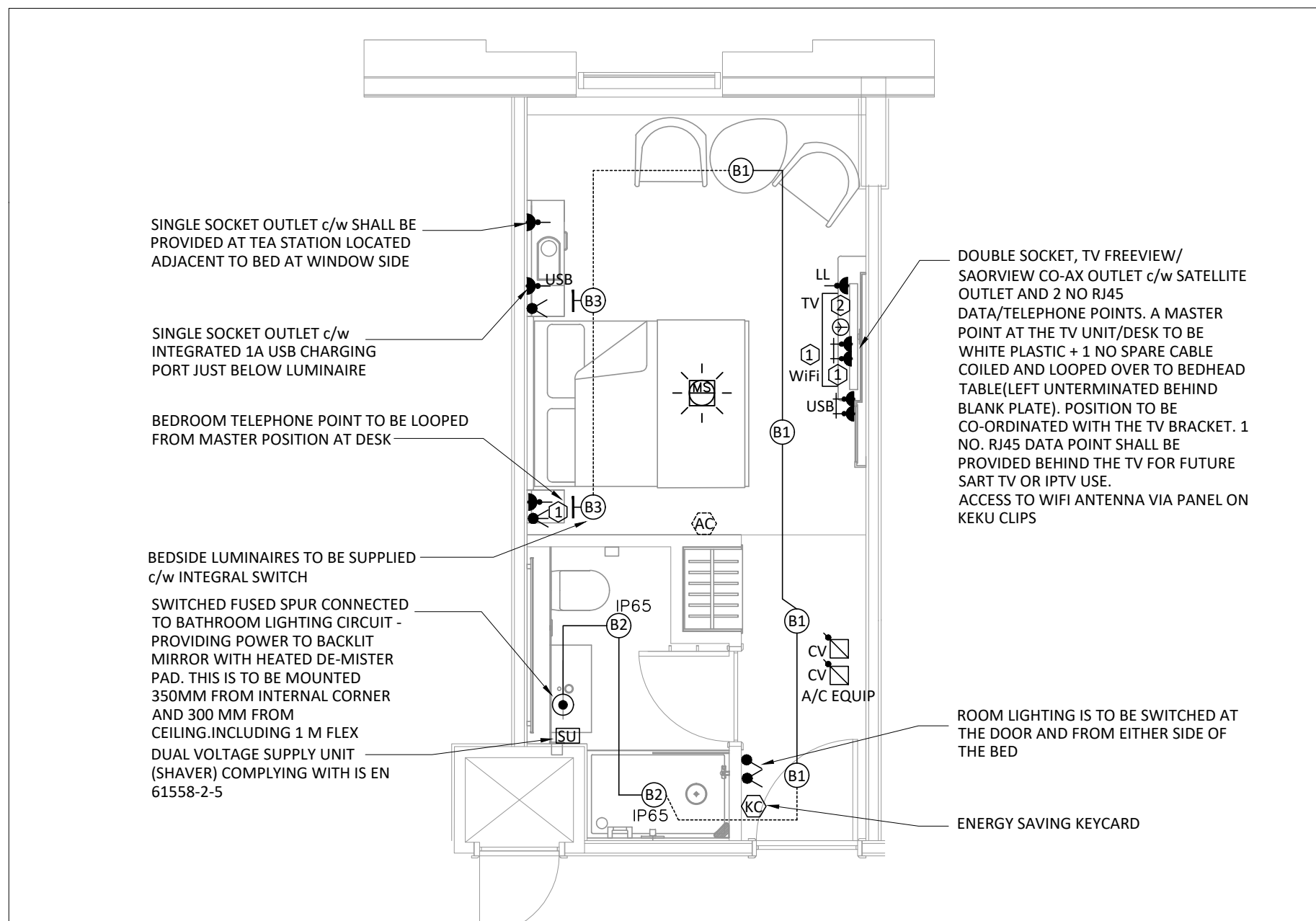
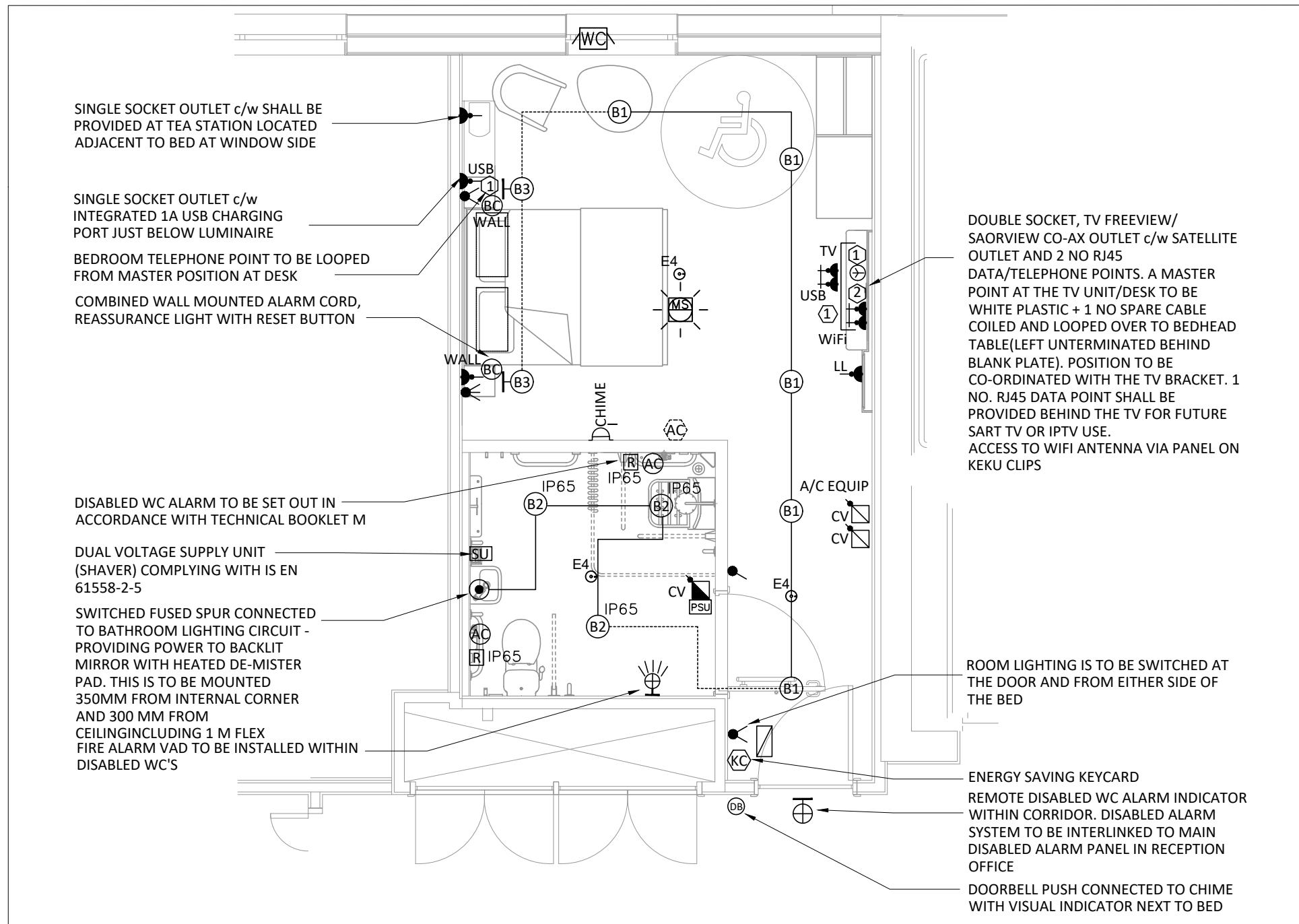


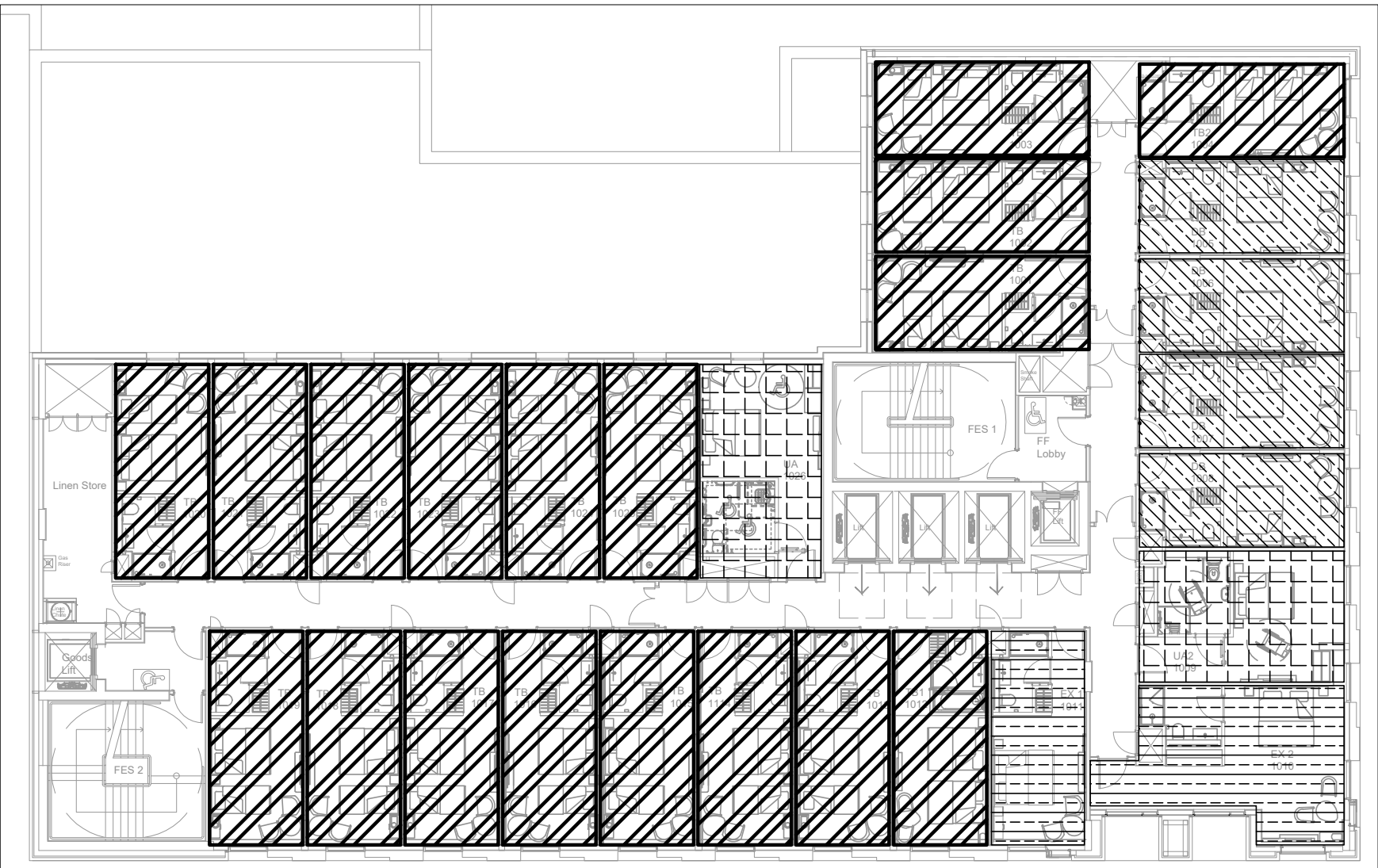
ROOM TYPE - TWIN ROOM



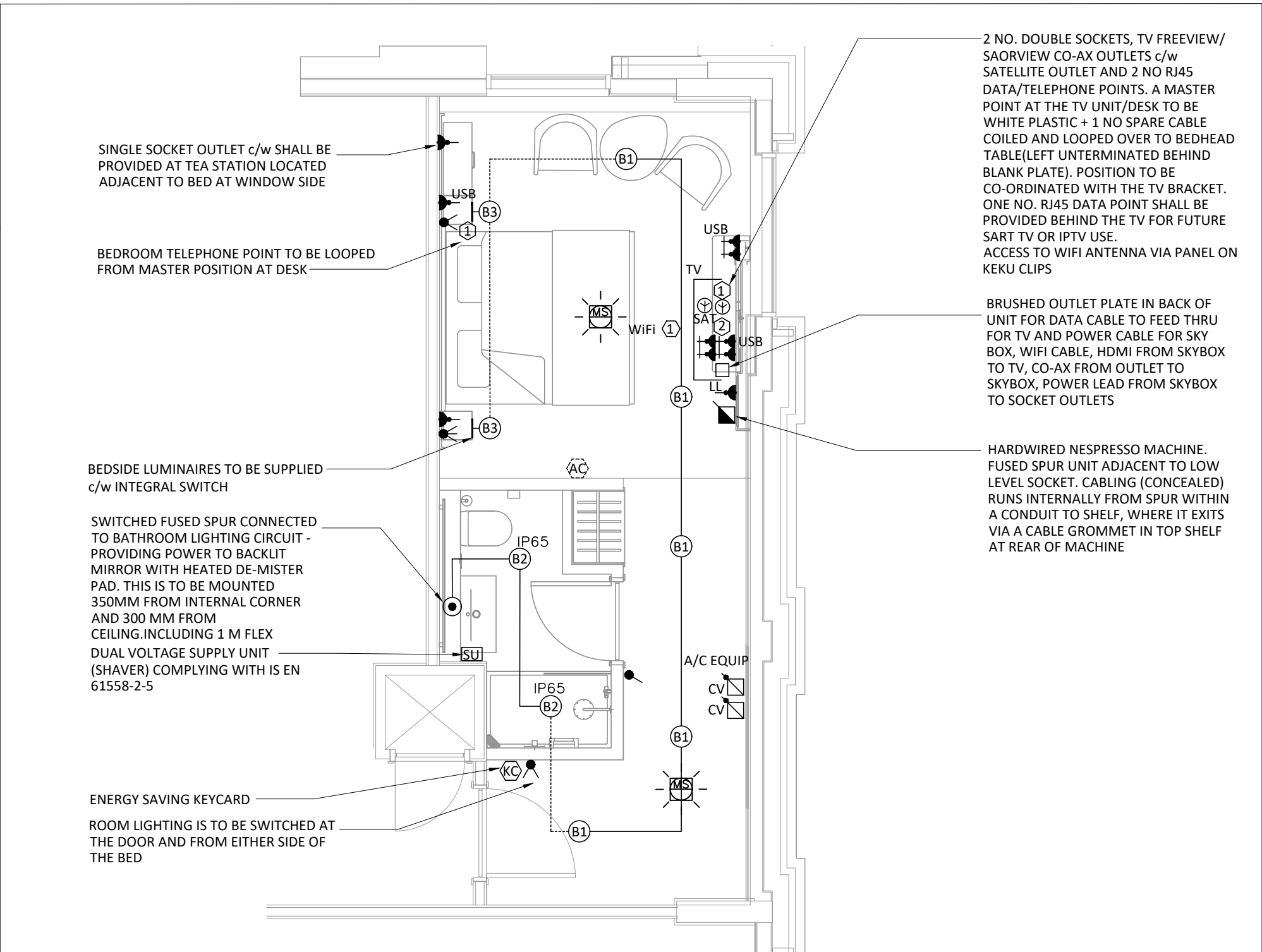
ROOM TYPE - DOUBLE ROOM



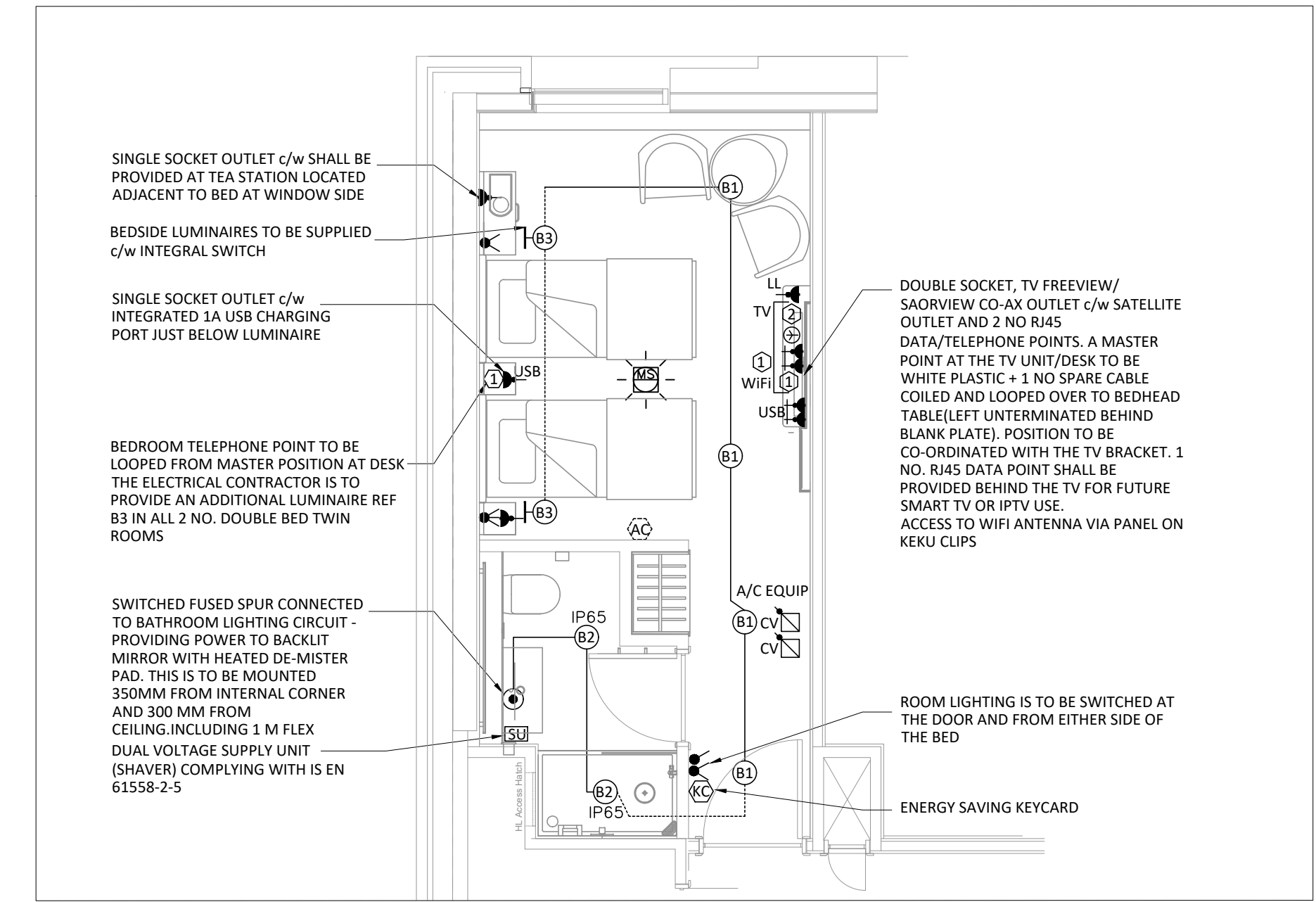
ROOM TYPE - TYPICAL UA DOUBLE ROOM



TENTH-ELEVENTH FLOOR
1:200



ROOM TYPE - EXECUTIVE ROOM

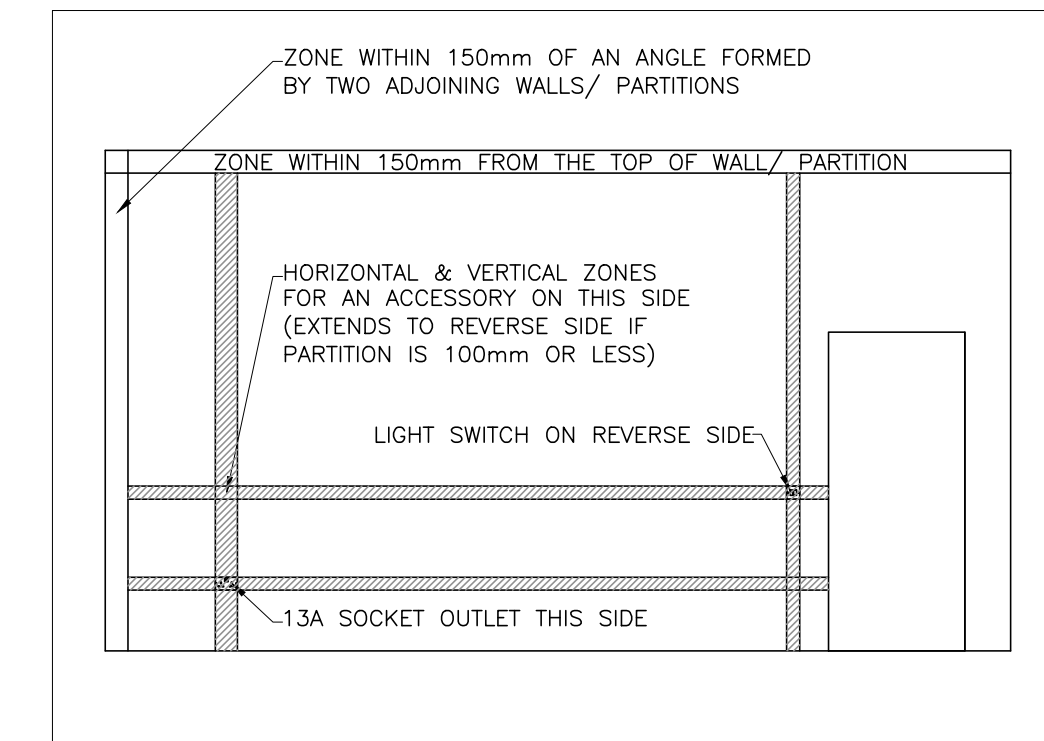
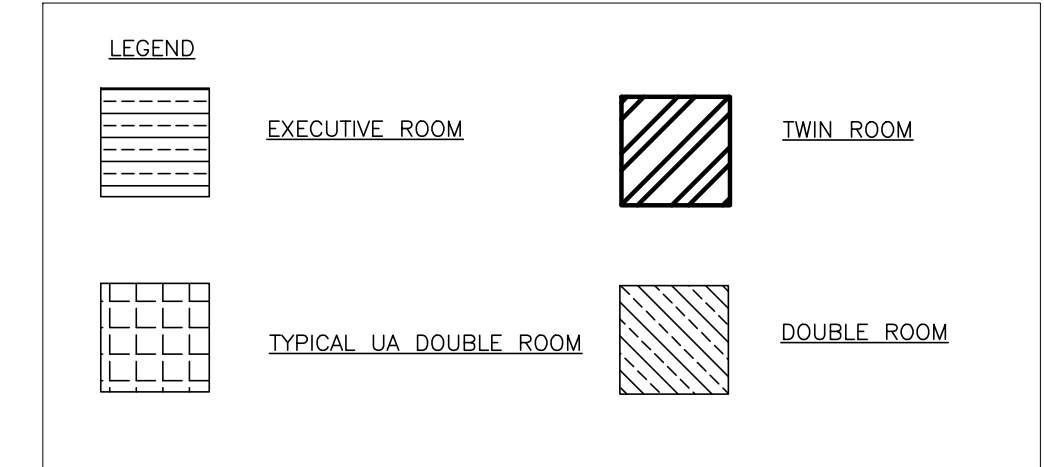
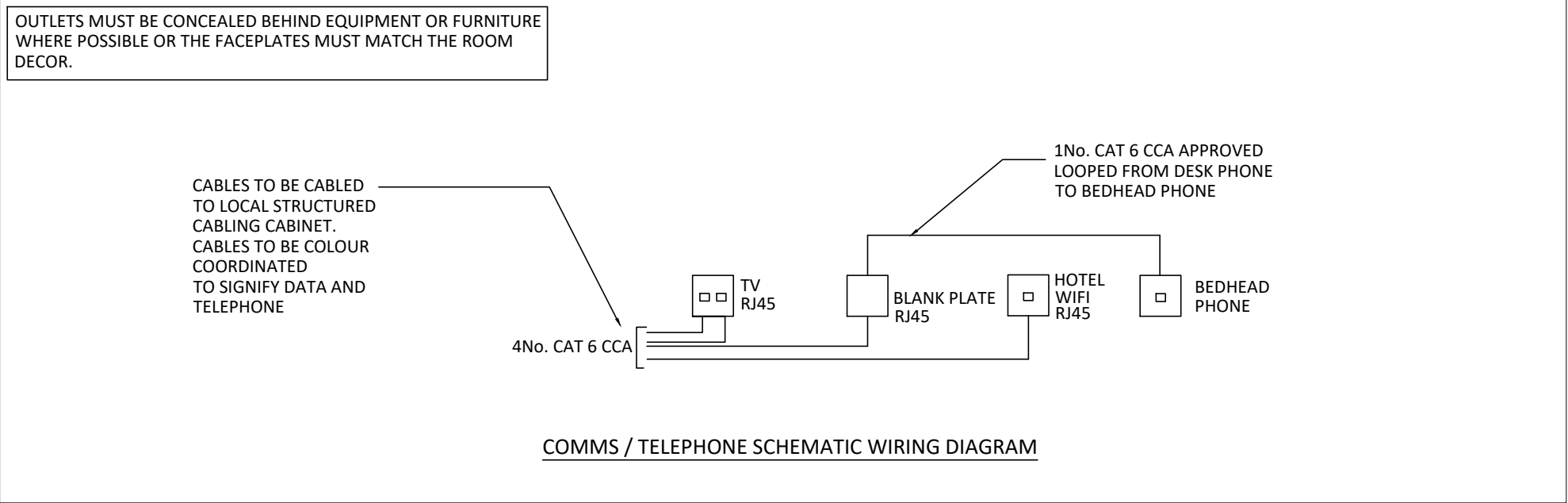


ROOM TYPE - TWIN SINGLE ROOM

NOTES

- NOTES DETAILED ON ALL DRAWINGS APPLY WHERE APPROPRIATE
- THE FOLLOWING SYMBOLS DENOTE
 - OPTICAL SMOKE/HEAT MULTISENSOR, SOUNDER, VAD FIRE ALARM HEAD.
 - BEDROOM KEYCARD CONTROLLER BY ELECTRICAL CONTRACTOR
 - BEDROOM AIR-CONDITIONING CONTROLLER
 - RECESSED LED DOWNLIGHT (REFER TO SCHEDULE)
 - RECESSED IP65 LED DOWNLIGHT (REFER TO SCHEDULE)
 - WALL MOUNTED READING LIGHT WITH INTEGRATED SWITCHING ON THE FITTING (REFER TO SCHEDULE)
 - MAINS WIRED ACCESSIBLE DOOR BELL - HONEYWELL SERIES 9 DW915S OR EQUAL AND APPROVED
 - MAINS WIRED ACCESSIBLE ROOM DOORBELL CHIME COMPLETE WITH VISUAL INDICATOR MOUNTED NEXT TO THE BED- HONEYWELL SERIES 9 DW915S OR EQUAL AND APPROVED
 - DUAL VOLTAGE SHAVER SOCKET (IS EN 61558-2-5)

- A SINGLE 13 AMP SOCKET SHALL BE PROVIDED AT THE TEA STATION LOCATED ADJACENT TO BED AT WINDOW SIDE
- RJ45 DATA/TELEPHONE OUTLET POINT, A MASTER POINT AT THE TV UNIT/DESK AND LOOPEO SLAVE POINT AT THE BEDHEAD TABLE
- ONE NO. TV FREEVIEW/SAORVIEW AERIAL OUTLET
- RJ45 DATA OUTLET SHALL BE PROVIDED BEHIND THE TV FOR FUTURE SMART TV OR IPTV USE
- DOUBLE SOCKET SHALL BE PROVIDED BEHIND THE TV
- RJ45 DATA POINT SHALL BE PROVIDED WITHIN THE TV CASE GOODS FOR A HOTEL SUPPLIED WIFI ACCESS POINT
- FOR EXECUTIVE ROOMS ONLY AN ADDITIONAL DOUBLE SOCKET AND COAXIAL SINGLE OUTLET BOX FOR INSTALLATION OF SKY SERVICES IS REQUIRED (LOCATED WITHIN TV HOUSING). THIS SHALL REQUIRE F TYPE CONNECTORS AND SATELLITE COMPATIBLE HEADEND, SPLITTER AND TAPS. THE SKY SERVICE SHALL NOT HAVE RECORD OR PAUSE FACILITIES SO ONLY 1 CO-AX IS REQUIRED. THIS IS IN ADDITION TO THE FREE TO AIR SERVICE PROVIDED IN ALL ROOMS.
- ONE NO. DOUBLE SOCKET WITH INTEGRATED USB CHARGING SHALL BE PROVIDED FOR GUEST USE ABOVE SHELF LEVEL AT THE TV
- A SINGLE 13A SOCKET SHALL BE FITTED AT LOW LEVEL BELOW TV UNIT
- WITHIN THE EXECUTIVE ROOMS ONLY AN ADDITIONAL FUSED SPUR UNIT ADJACENT TO SOCKET AT LOW LEVEL FOR HARD WIRED NESPRESSO UNIT LOCATED ON SHELF AT TV
- THE ELECTRICAL CONTRACTOR SHALL FIT THE WIFI TRANSCEIVER IN SUFFICIENT ROOMS TO ENSURE GOOD COVERAGE. NO WIFI POINTS ARE REQUIRED IN THE BEDROOM CORRIDORS.
- ENERGY SAVING KEY CARD IS TO CONTROL THE LIGHTING WHEN ROOM IS NOT OCCUPIED. THE AC AND ALL SOCKETS IN BEDROOM ARE 24 HOURS AND NOT LINKED TO THE KEY CARD. THE ELECTRICAL INSTALLATION NEEDS TO BE LABELED AT BOTH THE BREAKER AND LOCAL CONNECTION SUPPLY THAT THEY ARE SERVED FROM MULTIPLE LOCATIONS
- AT EACH REMOTE DISABLED WC ALARM INDICATOR WITHIN THE GUESTROOM CORRIDOR, THE DISABLED ALARM SYSTEM IS TO BE INTERLINKED TO THE MAIN DISABLED ALARM PANEL IN THE RECEPTION OFFICE.
- A SWITCHED FUSED SPUR CONNECTED TO BATHROOM LIGHTING CIRCUIT - PROVIDING POWER TO BACKLIT MIRROR WITH HEATED DE-MISTER PAD. THIS IS TO BE MOUNTED 350MM FROM THE INTERNAL CORNER AND 300MM BELOW THE CEILING
- WIRING ACCESSORIES VISIBLE TO THE GUEST TO BE A CLICK DECO RANGE, STAINLESS STEEL FINISH WITH BLACK INSERTS. SOCKETS TO HAVE OUTBOARD ROCKERS. ALL SOCKET OUTLETS ARE TO BE AGREED WITH THE INTERIOR DESIGNER
- CONCEALED WIRING ACCESSORIES TO BE A CLICK POLAR RANGE
- THE ELECTRICAL CONTRACTOR IS TO INCLUDE WITHIN THEIR TENDER FOR THE SUPPLY AND INSTALLATION OF INTUMESCENT AND ACOUSTIC PUTTY PADS



INCLUDE ALL NECESSARY OFFSETS OF SERVICES IN CEILING VOIDS, SERVICE DUCTS AND ALL OTHER AREAS TO ACHIEVE CROSSOVERS AND CO-ORDINATION OF MECHANICAL AND ELECTRICAL SERVICES.

Caldwell

CONSARC			
CONSARC			
JOB			
RENFREW STREET, GLASGOW MALDRON HOTEL			
DRAWING			
ELECTRICAL SERVICES INSTALLATION			
TYPICAL BEDROOM SERVICES			
DRAWING No./REVISION			
3840/E500		T2	
SCALE/PRINTED AT	DATE	DRAWN	CHECKED
1:50@A1	APR 19	LW	PON
UNIT 6 FORESTGROVE BUSINESS PARK NEWTOWNBREDA BELFAST BT8 6AW		TEL: 02890699720 FAX: 02890641625 E-MAIL: admin@caldwellconsulting.net	